

# Table of Contents

<b>Getting Started</b> .....	<b>3</b>
<b>Circle Time</b> .....	<b>3</b>
<b>Explorations</b> .....	<b>4</b>
<b>Crafts</b> .....	<b>5</b>
<b>Play Dough</b> .....	<b>6</b>
<b>Numeral Cards</b> .....	<b>7</b>
<b>All About Me</b> .....	<b>13</b>
<b>Construction</b> .....	<b>19</b>
<b>Farm Fun</b> .....	<b>31</b>
<b>Friendly Monsters</b> .....	<b>49</b>
<b>Fun with Food</b> .....	<b>59</b>
<b>Gingerbread</b> .....	<b>65</b>
<b>Numbers</b> .....	<b>79</b>
<b>Nursery Rhymes</b> .....	<b>99</b>
<b>Pets</b> .....	<b>113</b>
<b>Rainbows</b> .....	<b>131</b>
<b>Shapes</b> .....	<b>135</b>
<b>Snow</b> .....	<b>149</b>
<b>Things That Go</b> .....	<b>163</b>

*Every effort has been made to credit the authors of poems and rhymes appearing in this book.*

# Pets (cont.)

## Pet Home Matching

### Materials

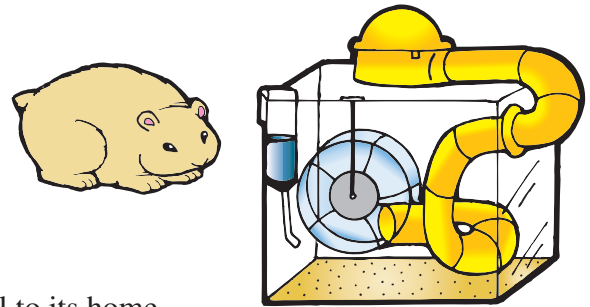
- ☉ Pet Cards and Home Cards (pages 121–127)

### Preparation

Cut out and laminate the cards.

### Directions

1. Set out the cards and encourage children to match each animal to its home.
2. Encourage language development by asking students to describe each animal and where it lives.



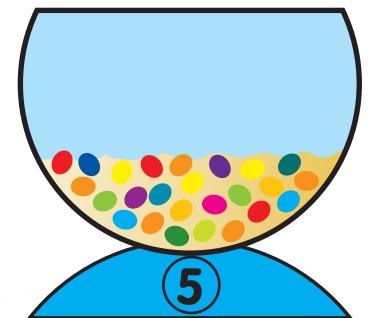
## Fish Bowl Math

### Materials

- ☉ white paper plates
- ☉ blue paint
- ☉ glue sticks
- ☉ black marker
- ☉ colored fish tank rocks
- ☉ Fish Patterns (page 120)

### Preparation

1. Cut the top fourth off of each paper plate to use as the base. Staple the base to the bowl.
2. Write a numeral (1–5) on the base of each fish bowl.
3. Thin out the blue paint with water until it goes on fairly transparently.
4. Set up your center for painting.
5. Glue fish rocks on the bottom of the fish bowl.
6. Cut out enough fish for students to put the correct number on each plate.



### Directions

1. Give each student a paper plate and have him or her paint the bowl blue.
2. Ask students to read the numbers on their fish bowl base and count out that number of fish.
3. Have them glue the fish into the fish bowl.
4. Encourage language development by asking students to state the number of fish in a complete sentence. For example, “There are \_\_\_\_\_ fish in the bowl.”

## Puppy Chow

### Materials

- ☉ various dried cereals
- ☉ paper bowls
- ☉ spoons

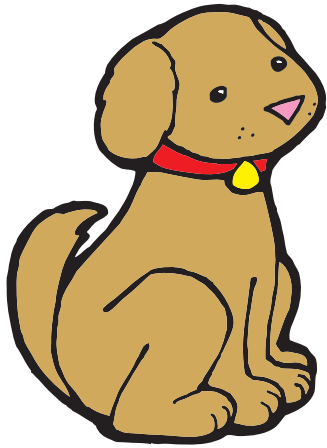
### Preparation

1. Place the various cereals in large bowls and provide serving spoons.
2. Give each student a paper bowl.

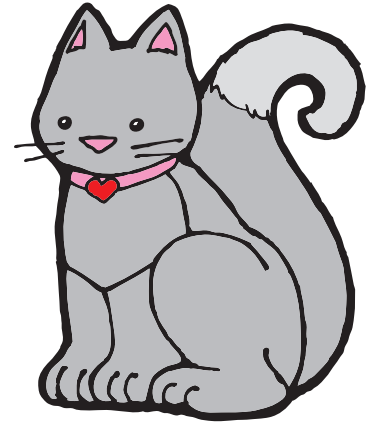
### Directions

1. Students can scoop whichever cereals they like into their bowls and mix them to create their own “dog food” or “cat food” for snack time.
2. If you’re really brave, let them eat it like a dog—no hands!

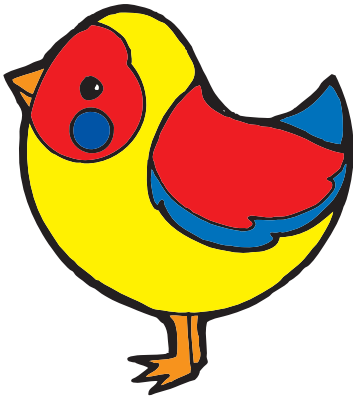




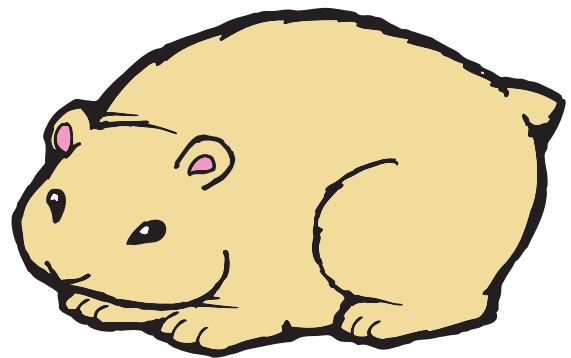
**dog**



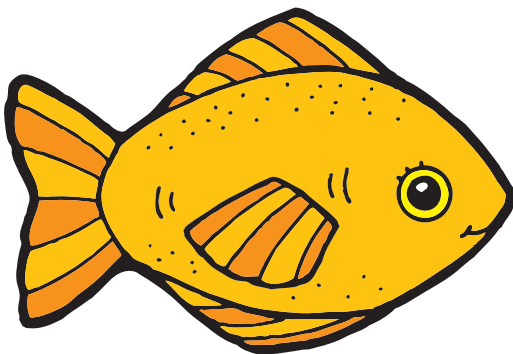
**cat**



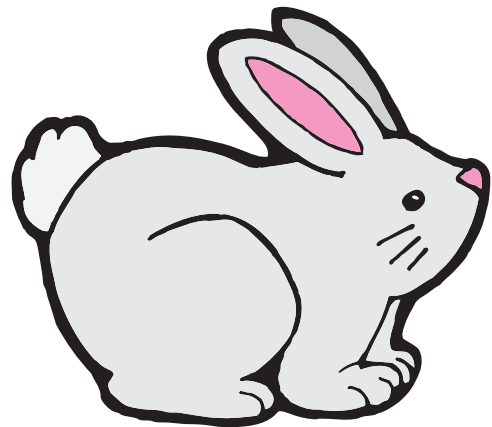
**bird**



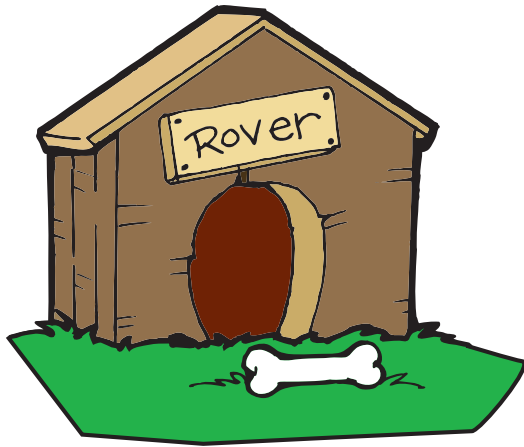
**hamster**



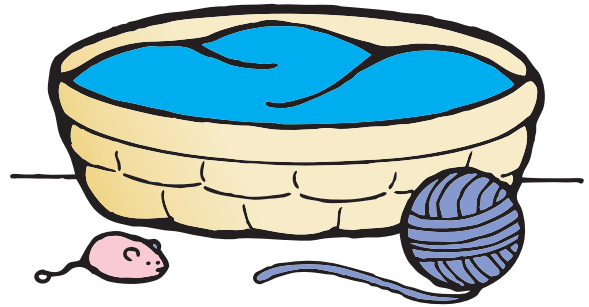
**fish**



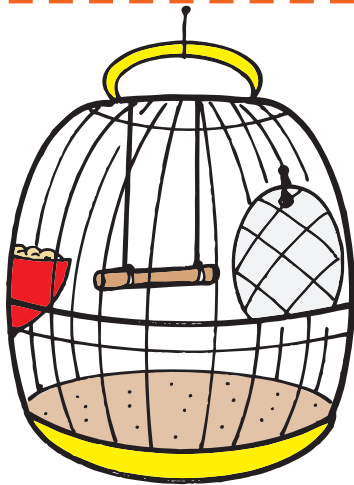
**rabbit**



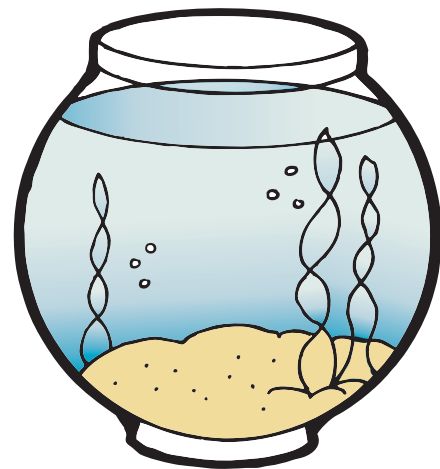
**doghouse**



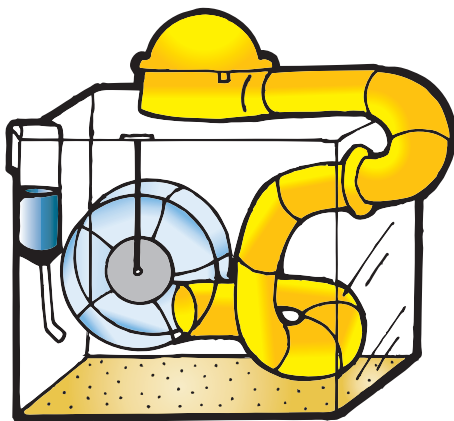
**cat basket**



**bird cage**



**fish bowl**



**hamster cage**



**rabbit hutch**