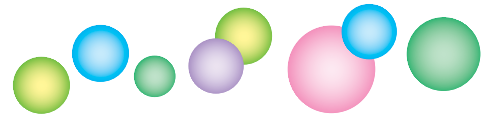
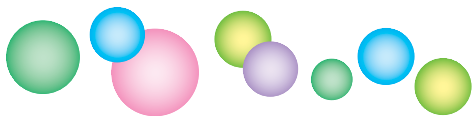


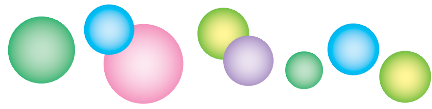


# Table of Contents

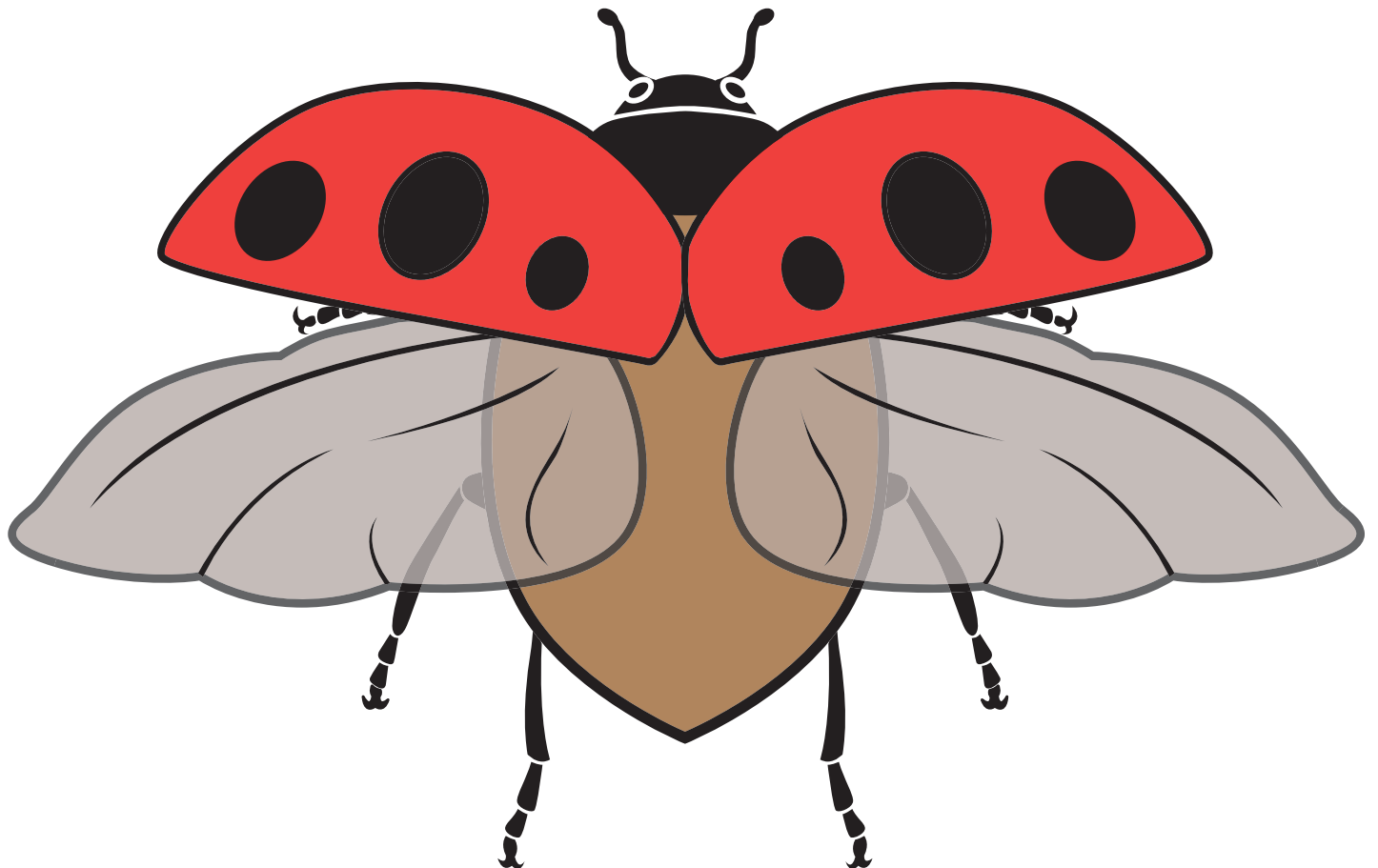
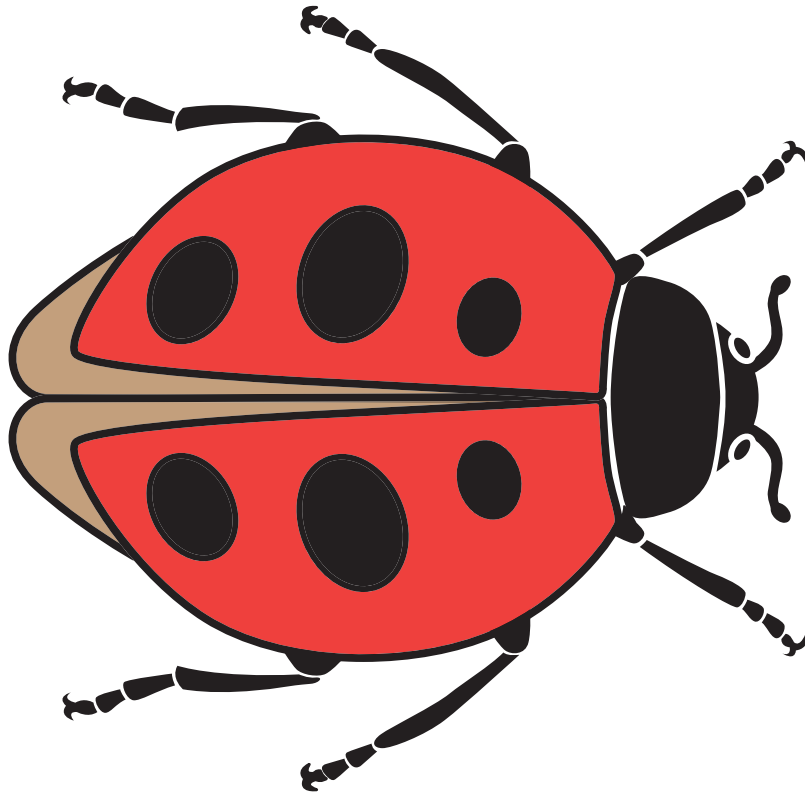
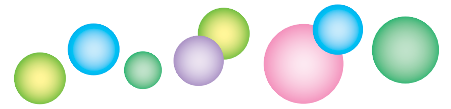


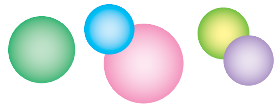
<b>Introduction</b> . . . . .	3
<b>Getting Started</b> . . . . .	4
<b>How to Set Up a Center</b> . . . . .	5
<b>KWHL Chart</b> . . . . .	6
<b>Science Skills and Goals</b> . . . . .	7
<b>How to Use This Book</b> . . . . .	8
<b>Science Standards</b> . . . . .	10
<b>Checking for Standards</b> . . . . .	11
<b>Parent Letter</b> . . . . .	12
<b>Life Science</b>	
Ladybugs . . . . .	13
Spiders . . . . .	29
Animals and Their Eggs . . . . .	43
Coral Reefs . . . . .	63
<b>Earth and Space Science</b>	
Shadows . . . . .	83
Lakes and Rivers . . . . .	101
Stars . . . . .	115
<b>Physical Science</b>	
Trees and Wood . . . . .	129
Water Around Me . . . . .	147
Tools and Machines . . . . .	161



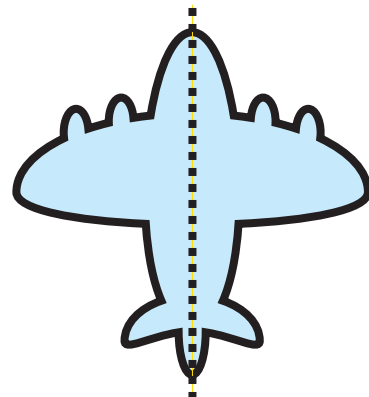
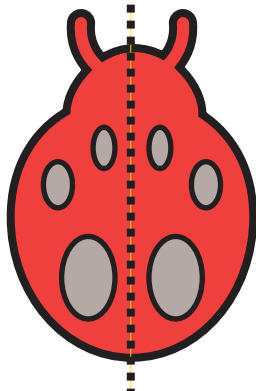
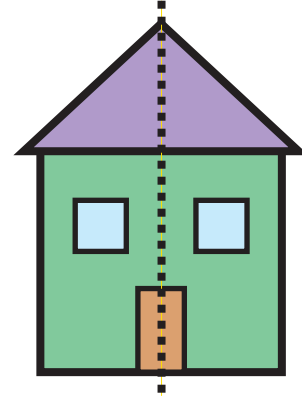
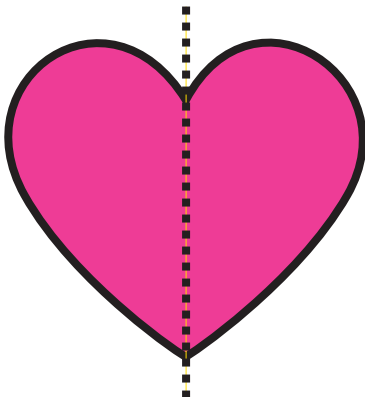
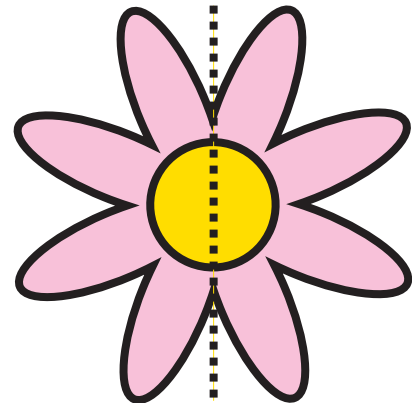
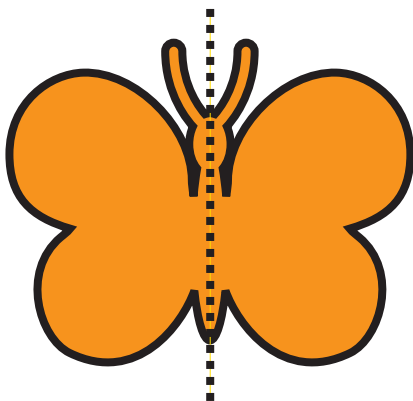
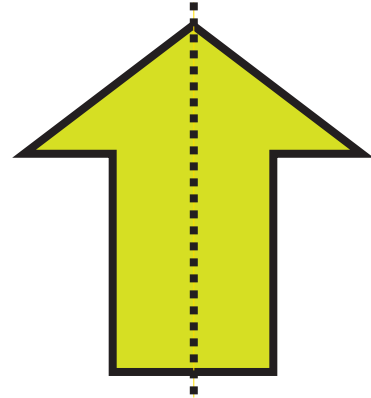
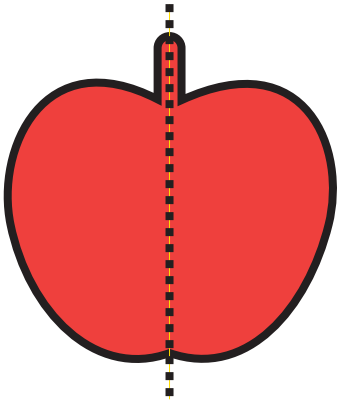
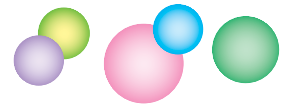


# Ladybugs





# Symmetry Cards



# Lakes and Rivers

1. Arrange the sand to create a mountain at one end.
2. Form channels for rivers and holes for lakes.
3. Pour water into the lakes and rivers.
4. Watch water run down the river and sit in the lake.

