



Healthy Teeth = Healthy Smiles!

Smile! February is National Children’s Dental Health Month. And that means it’s the perfect time for students to brush up on their dental health habits. This fresh collection of tooth-related activities is just what you need to promote pearly whites and long-lasting smiles.

ideas by Heather Godwin and Jill Hamilton

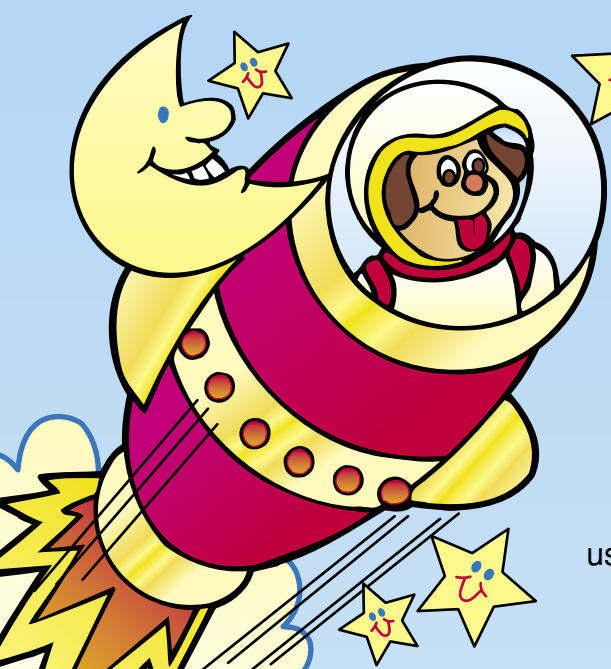
Sparkling Smiles Brush Through Here!

Set the stage for your dental health study with a giant toothbrush door decoration. To make the bristles, cut white plastic garbage bags into strips and tape them to the top of your classroom door frame. Cut a large toothbrush handle from bulletin board paper and program it with a dental health motto. Then tape the handle to the bristles to complete the giant toothbrush. No doubt students will be all grins as they *brush* through the doorway each morning!



Smile Maintenance

Promote positive dental health habits right from the start! Have each student write her name and the date on a copy of “Dental Data” (page 95). Review the record-keeping activity; then ask each child to post her data sheet on her family’s refrigerator. Suggest that the students record their dental data before they go to bed each night. One week later, reward each student who returns a completed data sheet with a piece of sugarless gum or a tooth-shaped sticker. Repeat the activity as often as desired, each time challenging students to earn five or more smiling teeth on their data sheets. Reward each student who meets the class goal with a special privilege or treat.



3...2...1... Liftoff!

Touring the Solar System

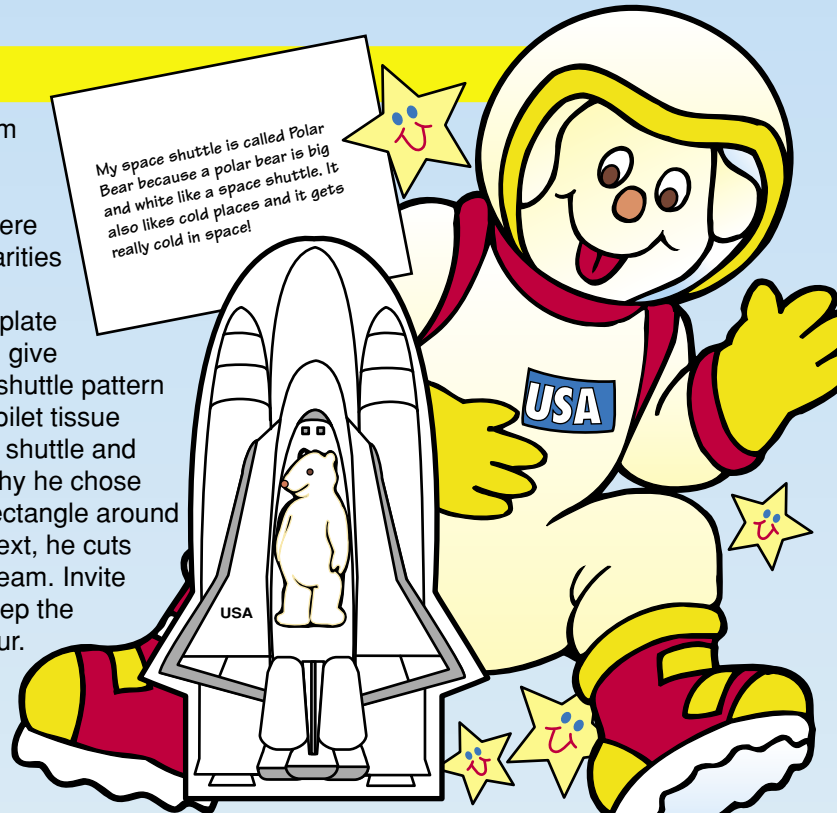
Launch your amateur astronauts on a tour of the solar system using these integrated *and* out-of-this-world activities!

Faye Fowler Haney—Gr. 2, Valley View Elementary, Jonesboro, AR

Shuttle Preparations

Making mini space shuttles is sure to spark enthusiasm for a class tour of the solar system! Before you begin the project, explain that the names of four of NASA's space shuttles (*Columbia*, *Discovery*, *Atlantis*, and *Endeavor*) were also names of famous ships. Invite students to find similarities between a large ship and a space shuttle (*big, powerful, explore unknown territory, etc.*). Then have them contemplate animals that share similarities with a space shuttle. Next, give each child a white construction paper copy of the space shuttle pattern on page 115, a white 4½" x 6" rectangle, and an empty toilet tissue tube. A student chooses an animal for which to name his shuttle and illustrates it in the center of his pattern. Then he writes why he chose this animal on his paper rectangle. He glues the paper rectangle around the cardboard tube, keeping the writing to the outside. Next, he cuts out the pattern and glues it to the tube along the paper seam. Invite students to share their projects with their classmates. Keep the space shuttles on display throughout your solar system tour.

My space shuttle is called Polar Bear because a polar bear is big and white like a space shuttle. It also likes cold places and it gets really cold in space!



Astronaut Assessment

Track your youngsters' understanding of solar system concepts with these adorable astronaut look-alikes! To make an astronaut likeness, a child cuts out the space suit and glove patterns from a white construction paper copy of page 114. She glues each glove to the space suit where indicated. Then she cuts her face from a school photo (or another snapshot) and glues it to the pattern. Collect the projects and staple an opened snack-size resealable plastic bag near the waist of each astronaut, keeping the gloves free to overlap the bag. Then staple the projects along the bottom of a solar system display. Set aside a few minutes at the end of each solar system lesson for every student to summarize what she learned that day on a 3" x 5" index card. Then have her slip the card into her astronaut's bag. A quick read by you reveals how well the students understood the day's lesson. A quick read by students provides an instant review of the concept(s) covered!

