

# Word Skills & Vocabulary

## Banana Splits

Tempt your students to practice **compound words** with this puzzle center! Duplicate several banana patterns from page 25 on construction paper and label each one with two words that, when joined together, form a compound word. Cut out the shapes; then use a different jigsaw style to cut each banana in half. Store the banana pieces in a clean ice-cream container. Place the container, a supply of paper, and pencils at a center. A student removes the cutouts from the container, matches the banana halves to form compound words, and writes the words on her paper.

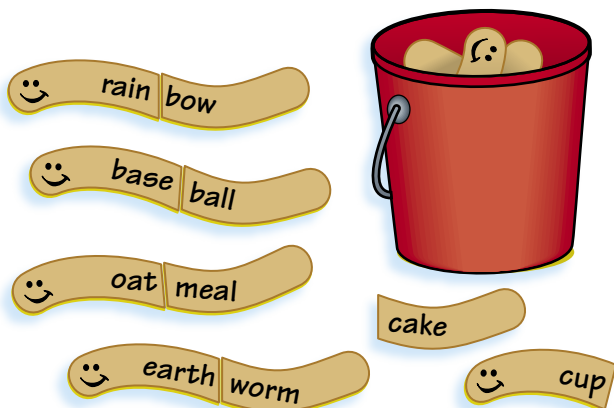
To extend the center activity, place a dictionary at the center and post the ice-cream code from page 23. Challenge each child to create additional compound words using the programming on the banana halves. After recording the compound words on the back of her paper, she verifies each one with the dictionary. Then she tallies her confirmed compound words, refers to the code, and illustrates at the bottom of her paper the dessert she's earned.

adapted from an idea by Sr. M. Dorothy Salazar  
Incarnate Word Academy  
Brownsville, TX



## Compound Worms

These unique earthworms will have students digging into **compound words!** Make a brown construction paper copy of page 26. Cut out each worm; then cut each worm into two sections. Also cut out the answer key. Place the worm sections in a small pail. Set the pail, answer key, and paper at a center. A student arranges the sections to form ten compound words; she uses the answer key to check her work. Then she chooses five of the compound words and writes a sentence with each one.



Cindy Powell  
Erie, PA

# Ice-Cream Compound Word Code

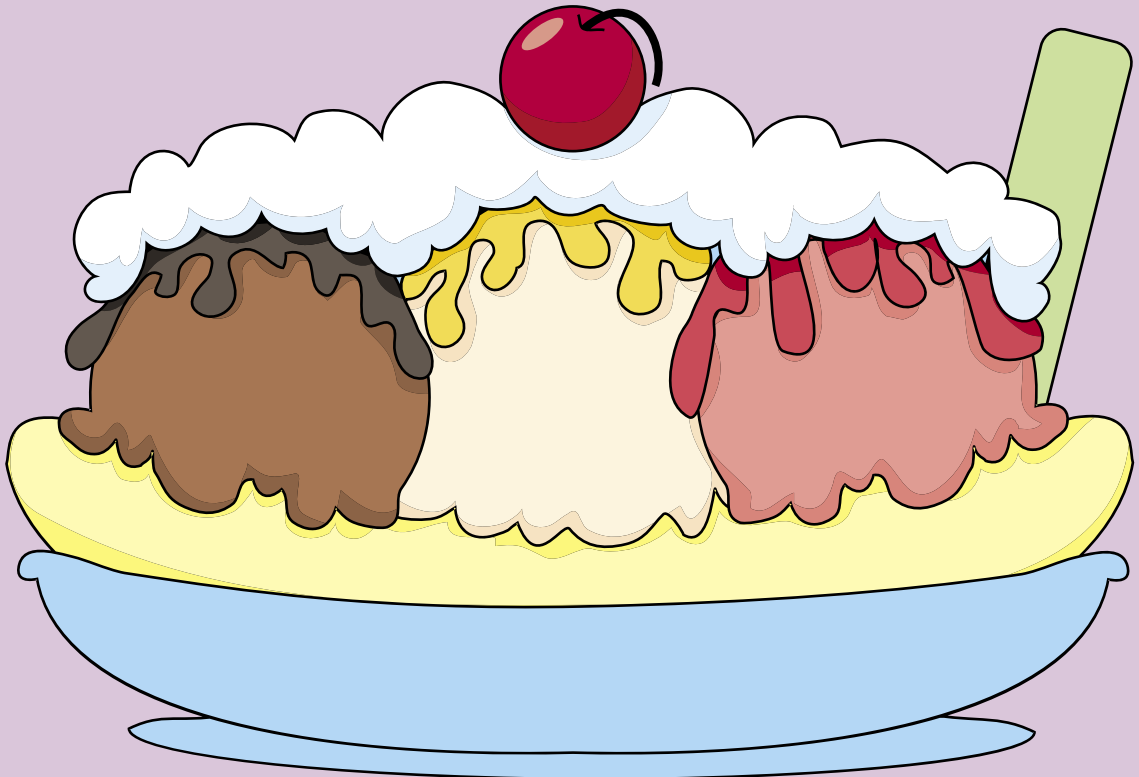
1–2 words = 1 scoop

3–5 words = 2 scoops

6–9 words = 3 scoops

10 or more words =

**banana split!**



©The Mailbox® • Learning Centers • TEC61024