

# Visual discrimination: matching pictures

## Fish-Tank Twins

Pages 5–14

### Materials:

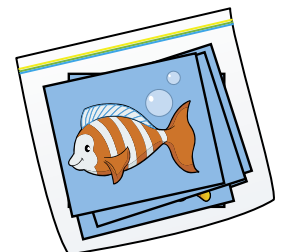
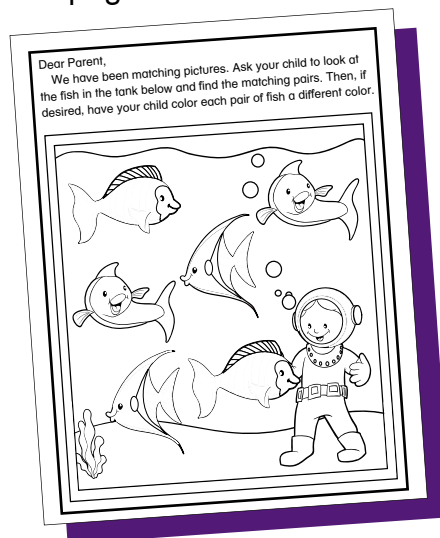
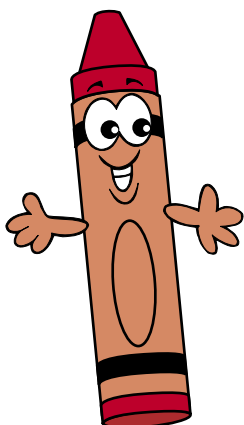
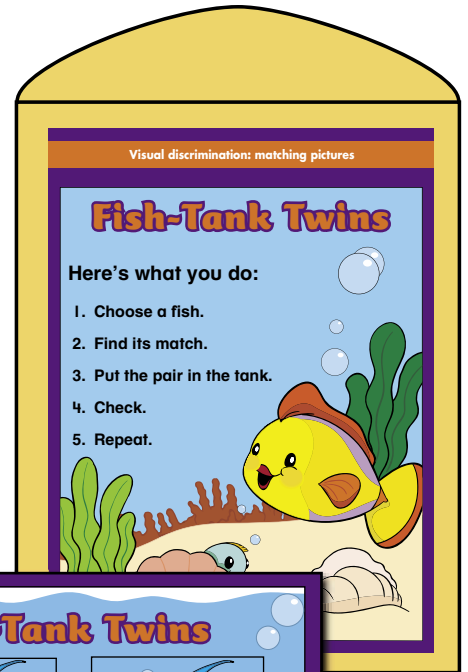
scissors  
glue  
10" x 13" envelope  
resealable plastic bag

### Preparing the center:

1. Tear out the student directions, center mat, and center cards on pages 7–14.
2. Glue the student directions (page 7) on the envelope. If desired, laminate the center mat and cards on pages 9–14.
3. Cut out the cards and place them in the bag.
4. Make copies of the reproducible parent page on page 6.
5. Store the center mat, bag, and copies of the parent page inside the envelope.

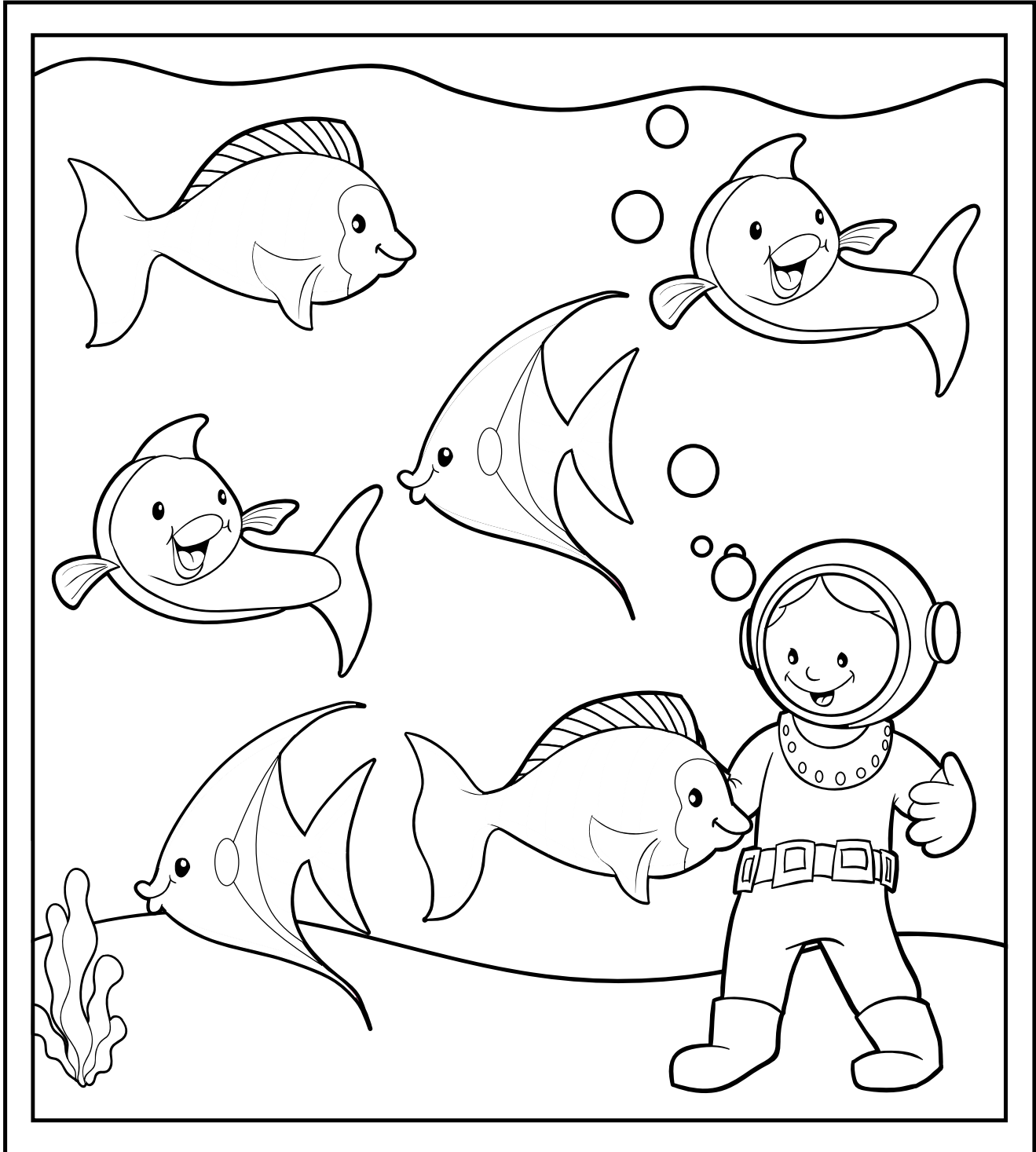
### Using the center:

Have the student follow the directions on the envelope. Provide assistance as needed. After he completes the center activity, have the student take home a copy of the parent page.



Dear Parent,

We have been matching pictures. Ask your child to look at the fish in the tank below and find the matching pairs. Then, if desired, have your child color each pair of fish a different color.



# Fish-Tank Twins

## Center Cards

Use with the directions on page 5.

