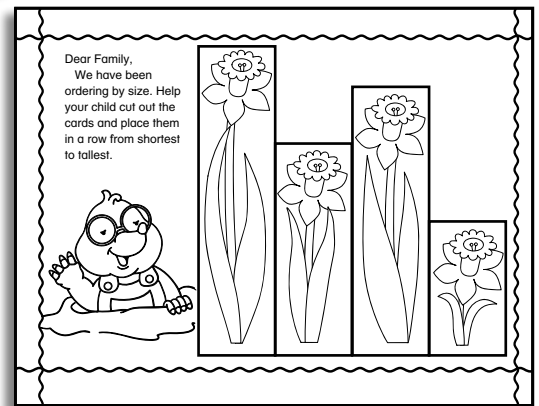


A Growing Garden

Ordering by size

Preparing the center:

1. Tear out the “A Growing Garden” file folder center from the back of the book and the center cards on page 39.
2. Cut out the cards and place them in a resealable plastic bag. Then tape to the bag a copy of the label below. Use a clothespin to attach the bag to the folder. (Color a copy of the cards on page 32 to use as replacements when needed.)
3. Make a class supply of the take-home practice page on page 12. After a child has had an opportunity to use the center, have him take home a copy of the page to complete with his family.



Using the center:

1. A child places each card faceup.
2. He chooses the cards for one type of flower. Then he arranges them in order by size on the center mat.
3. He flips all of the cards over to check his answers. If the numbers on the backs of the cards are in order, he places the cards in the bag. If the numbers aren't in order, he rearranges the cards until they are in the correct order; then he places the cards in the bag.
4. He repeats Steps 2 and 3 for the remaining set of cards.

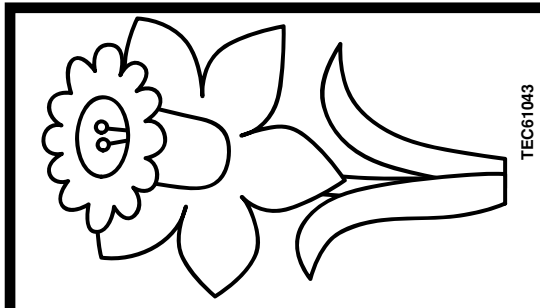
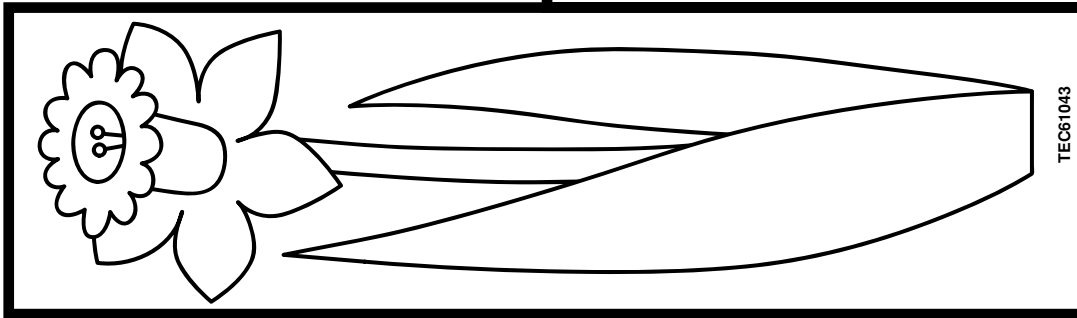
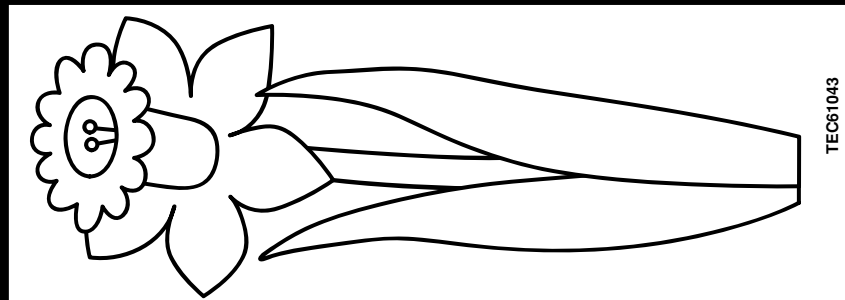
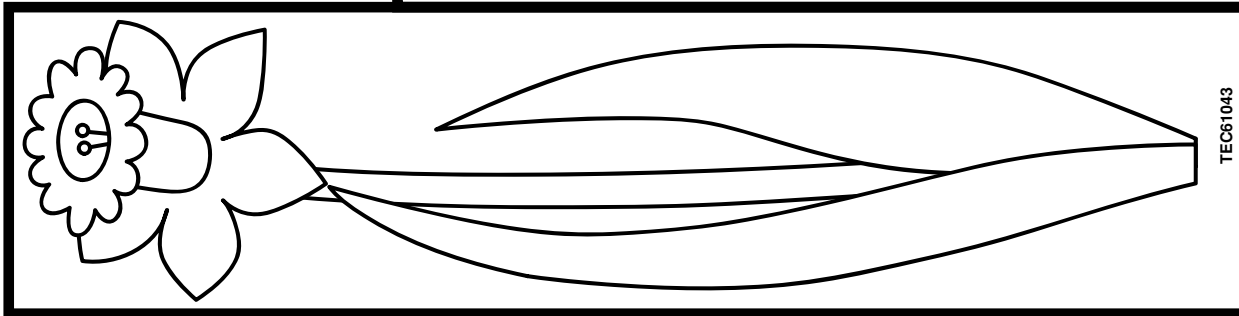
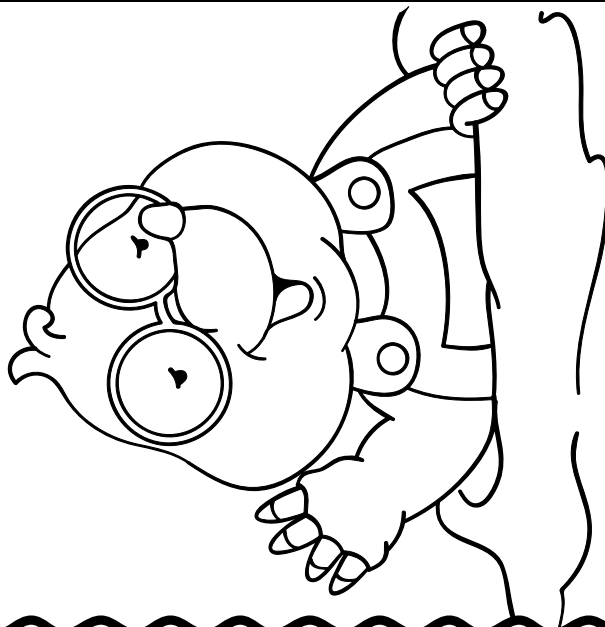
For added fun:

To extend the center, trim the stems of four artificial flowers so that each one is a different length. Then, after the child has ordered both sets of cards, encourage him to order the artificial flowers as well.

Bag Label

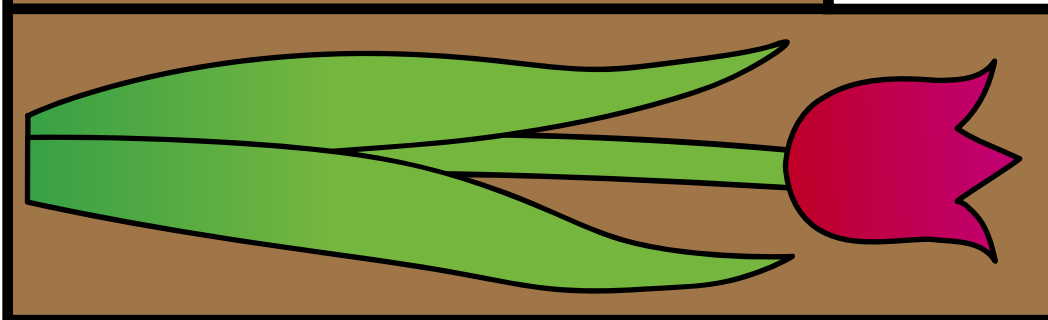
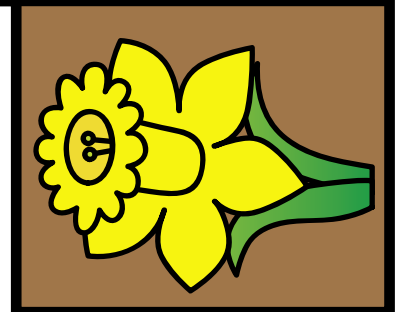
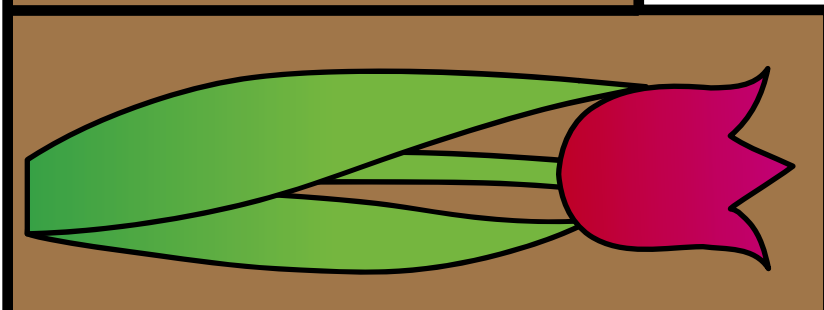
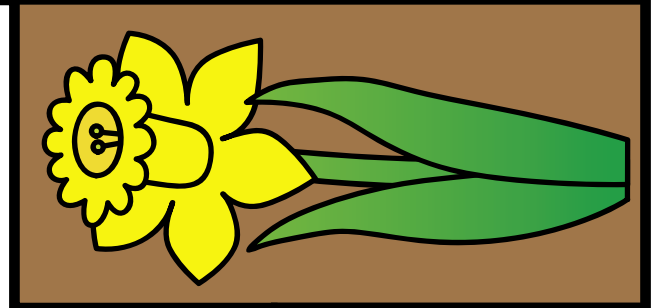
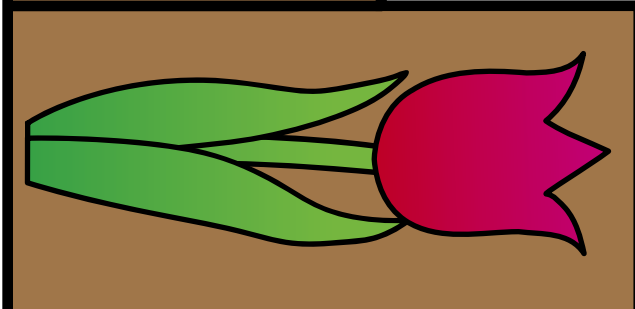
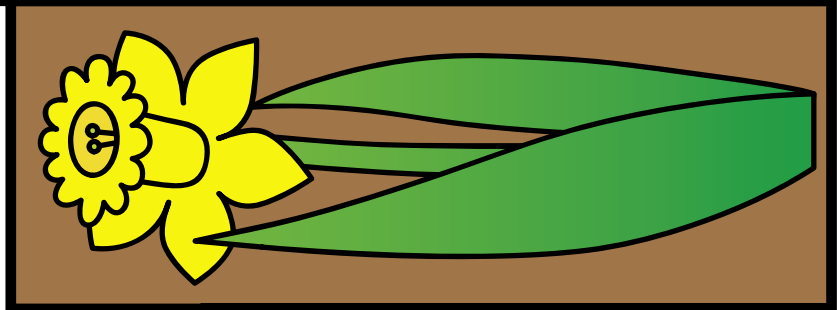
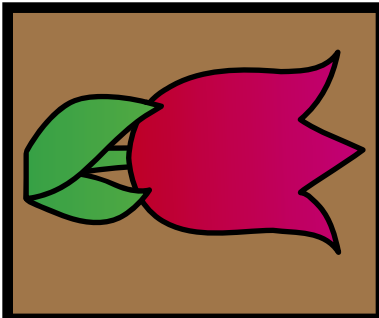
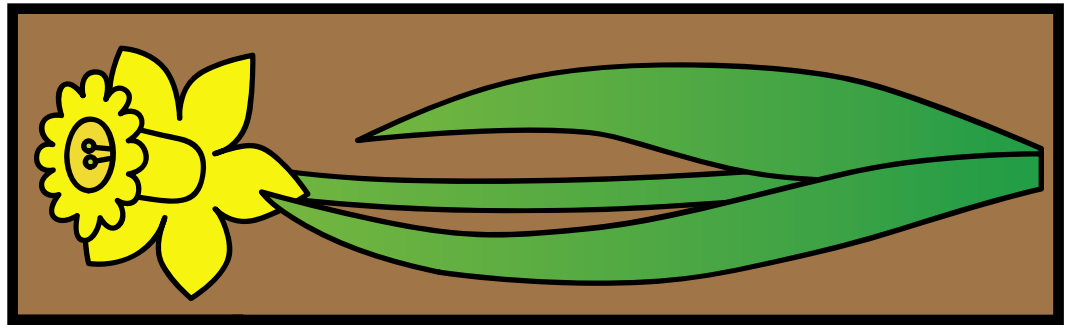


Dear Family,
We have been
ordering by size. Help
your child cut out the
cards and place them
in a row from shortest
to tallest.



Center Cards

Use with "A Growing Garden" on page 11.



Place.

