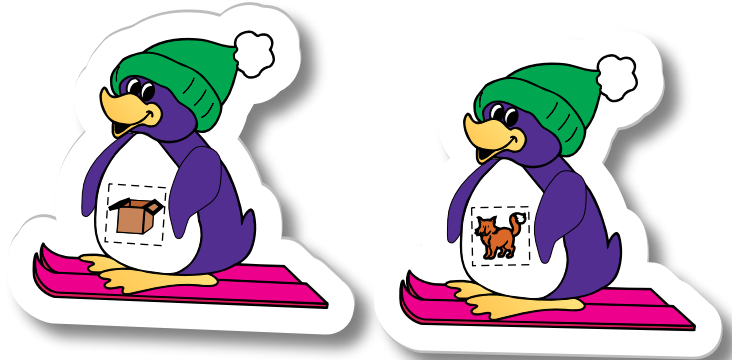
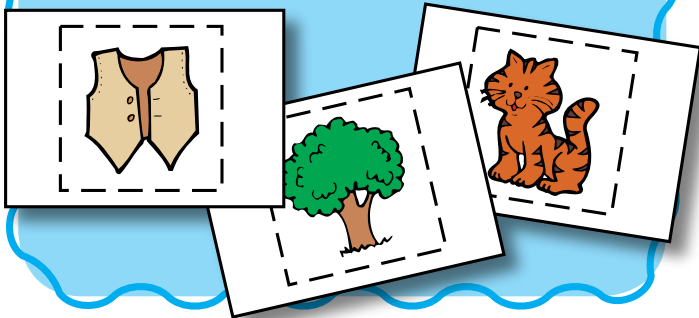


# Phonological Awareness & Phonics

## TRANSITION RHYME TIME

Move youngsters from one destination to another with this rhyme-time idea. In advance, color and cut out a copy of the rhyming pictures on page 38. Glue each cutout onto a separate card. To use, give each child a card. Ask him to say a word that rhymes with his card before he goes to his assigned destination (such as to a center, to the library, or to line up for dismissal). **Rhyming**

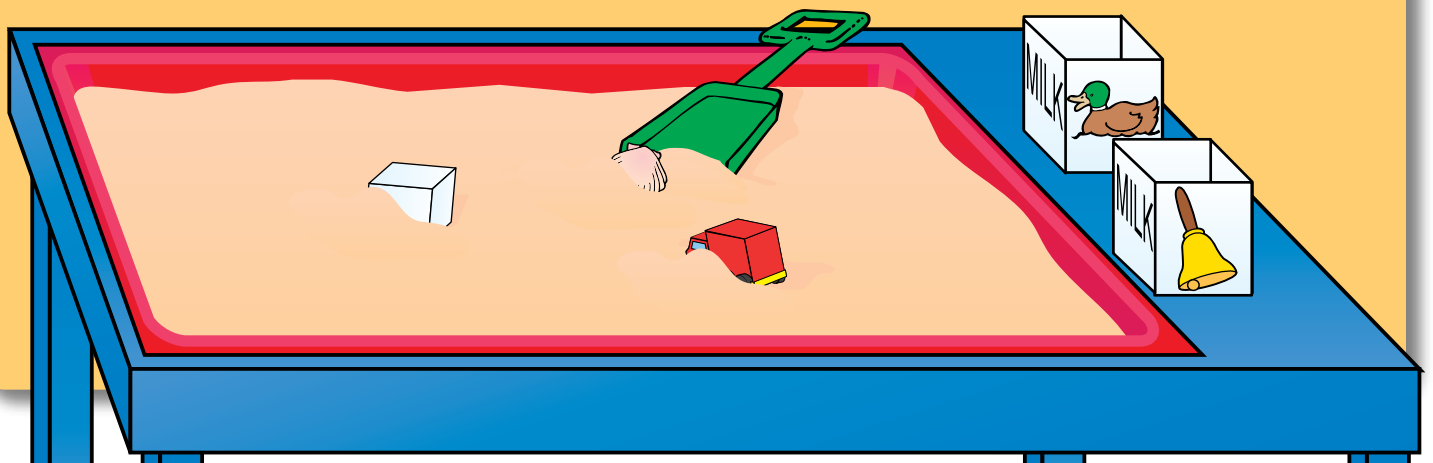


## Rhyming With Shape Pads

Use this versatile seasonal center throughout the year. To prepare, photocopy the rhyming pictures on page 38. Glue each of the pictures onto a separate sheet from a seasonal-shaped notepad. Place the notepad sheets and spring-type clothespins in a center. To use this center, a child matches each picture to a corresponding rhyming picture and uses a clothespin to clip each pair together. **Rhyming**

## A-Digging We Will Go

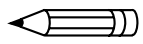
Your little ones will really dig rhymes when they use this fun center. In advance, collect a clean half-pint milk carton for each rhyming word family that you plan to study. Cut off the top of each carton; then glue a picture representing each different word family onto each carton. (You may find the pictures on pages 38 and 39 useful.) Place the cartons near your sand table. Bury in the sand a variety of small objects that rhyme with the pictures on the cartons. To use the center, a child digs an object out of the sand, then places it in the corresponding carton. **Rhyming**



# A Rainy Day

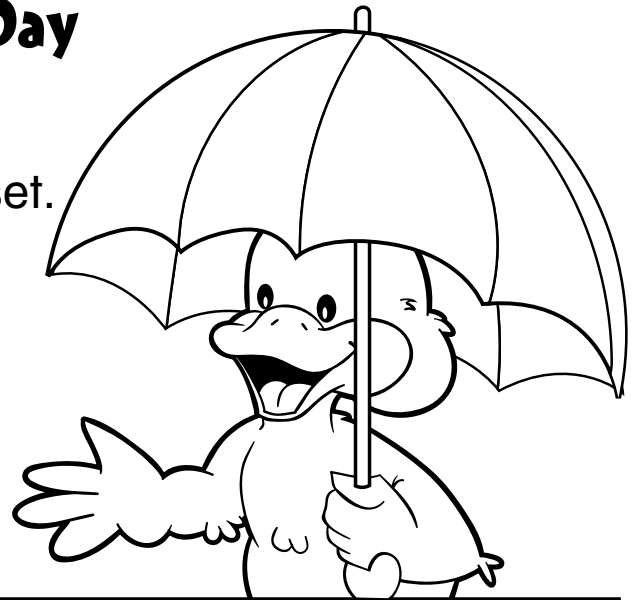


Count.



Write how many are in each set.

Add.



 _____ + _____ = _____	 _____ + _____ = _____
 _____ + _____ = _____	 _____ + _____ = _____
 _____ + _____ = _____	 _____ + _____ = _____
 _____ + _____ = _____	 _____ + _____ = _____