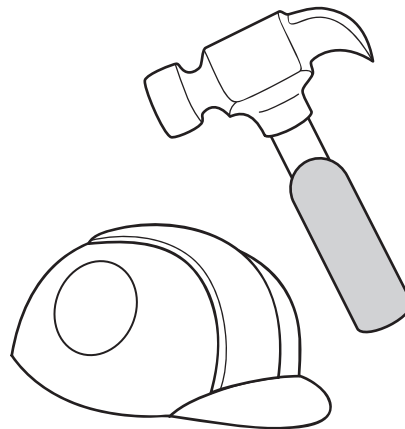
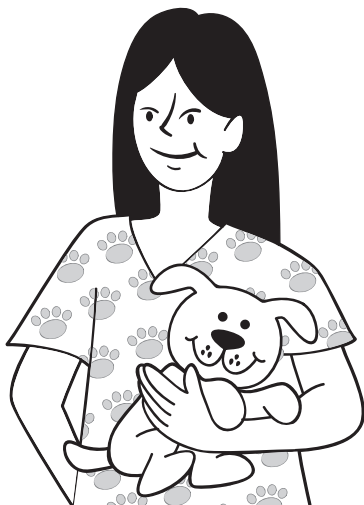
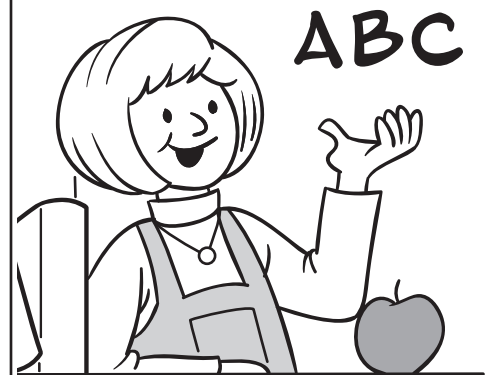
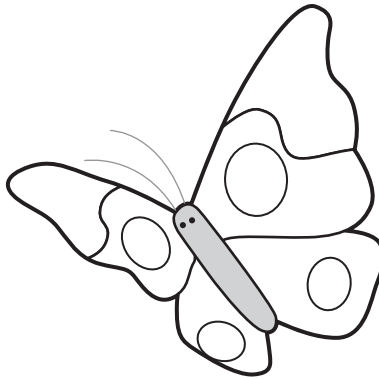


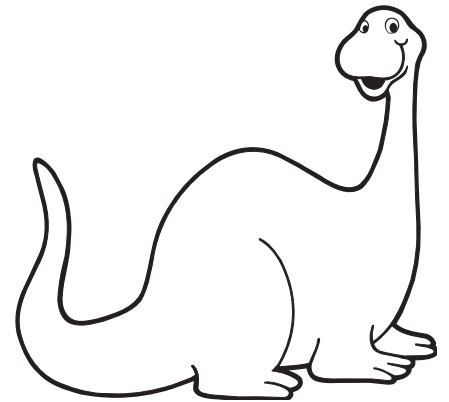
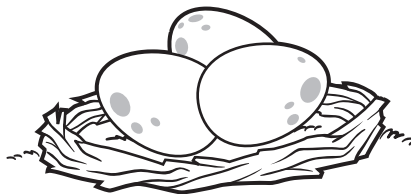
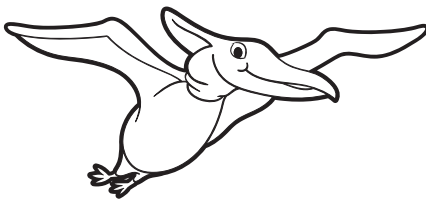
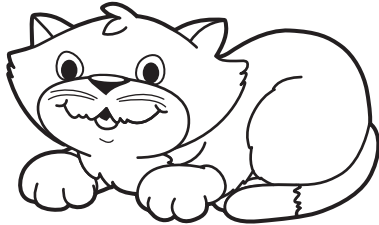
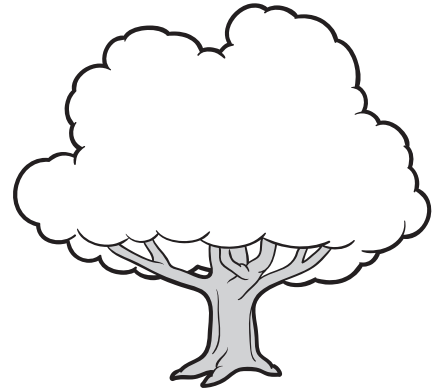
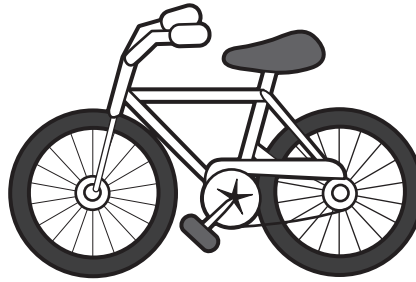
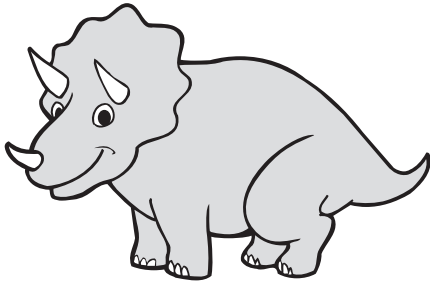
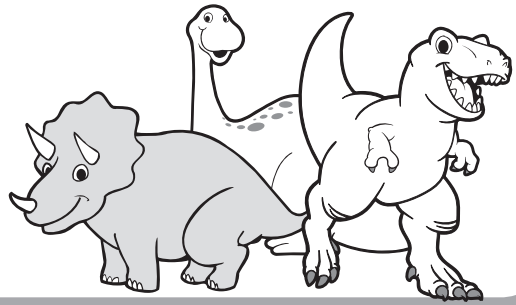
# Community Helpers



Everything Themes • ©The Mailbox® Books • TEC61260

**Note to the teacher:** Read aloud the theme title. Then name each picture and invite youngsters to describe how it does or does not relate to community helpers. Have a child circle each picture that shows a community helper or something that relates to a community helper and cross out each picture that does not. *The butterfly does not relate to community helpers. Less obvious pictures that do relate to community helpers are the badge and whistle (police officers use these items) and the hard hat and hammer (a construction worker uses these items).*

# Dinosaurs



Everything Themes • ©The Mailbox® Books • TEC61260

**Note to the teacher:** Read aloud the theme title. Then name each picture and invite youngsters to describe how it does or does not relate to dinosaurs. Have a child circle each picture that can be related to dinosaurs and cross out each picture that cannot. *The bike and the cat do not relate to dinosaurs. Less obvious pictures that do relate to dinosaurs are the tree (some dinosaurs ate leaves) and the nest with the eggs (dinosaurs laid eggs).*